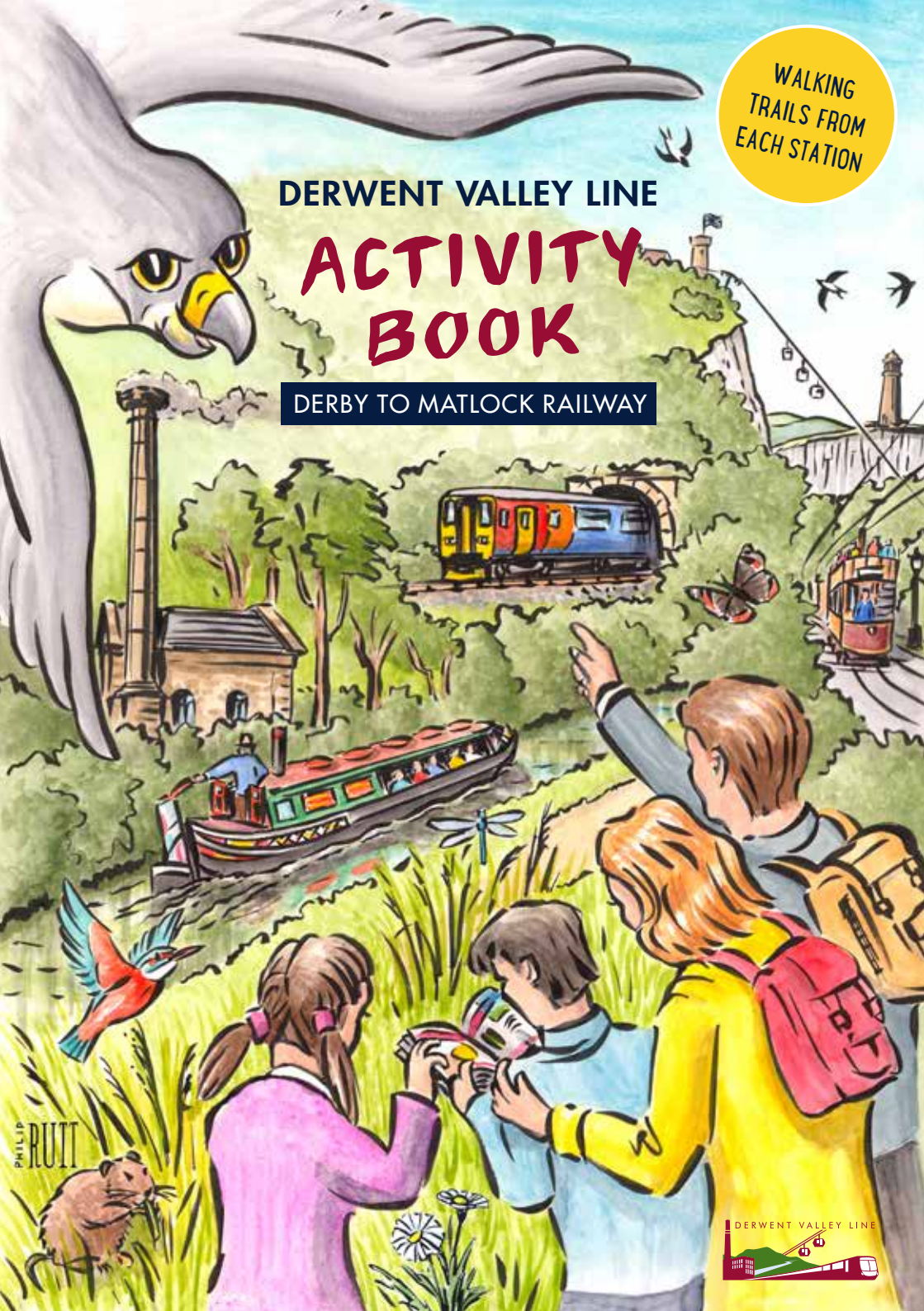


WALKING
TRAILS FROM
EACH STATION

DERWENT VALLEY LINE

ACTIVITY BOOK

DERBY TO MATLOCK RAILWAY



PHILIP
RUITT



THE STATION GARDENS

The Station platform gardens are in a Mediterranean style, with lots of herbs and colourful insect friendly plants. This joint project involved a number of groups including the railway companies and the local community.



DUFFIELD CASTLE

The footprint of one of England's largest castles points to the importance of this area in Norman times. A rebellion by Robert de Ferrers (Earl of Derby) against King Henry II led to the destruction of Duffield Castle in 1173, almost 100 years after its construction. Climb the steps and follow the verse to help you imagine the dramas that took place here.

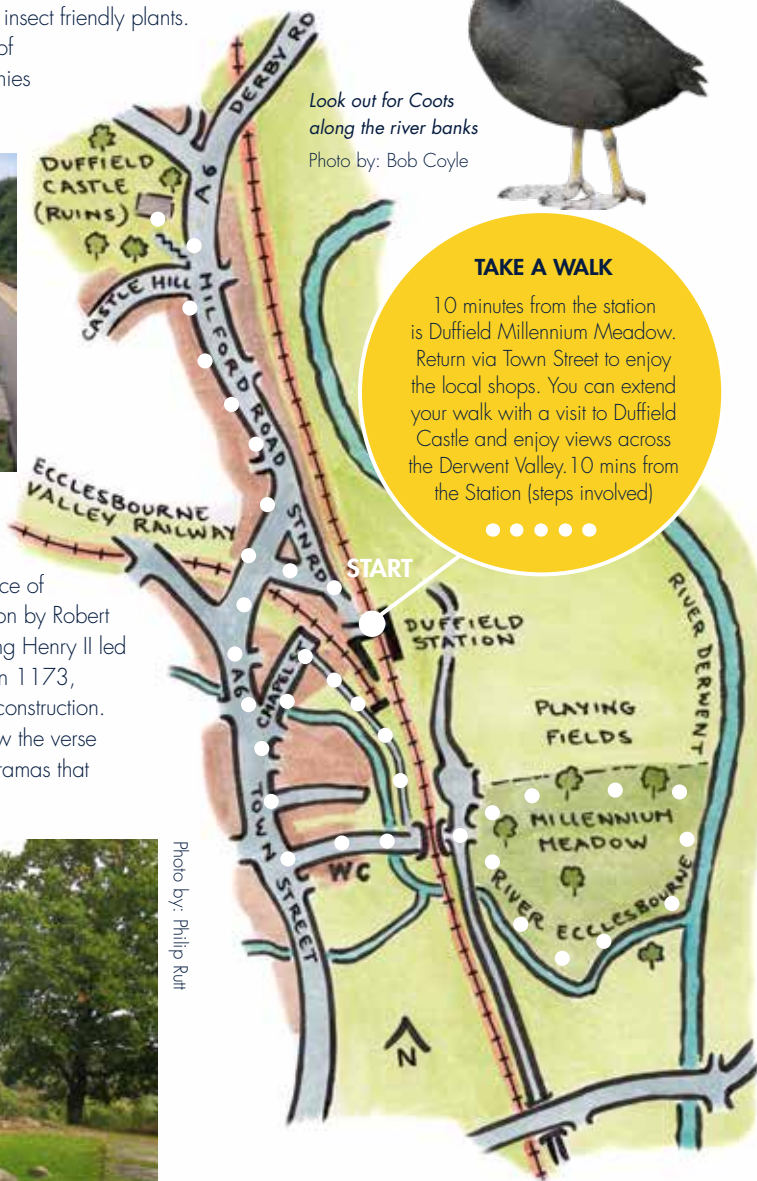
lords de ferrers



Photo by: Phillip Ruff



Look out for Coots along the river banks
Photo by: Bob Coyle



TAKE A WALK

10 minutes from the station is Duffield Millennium Meadow. Return via Town Street to enjoy the local shops. You can extend your walk with a visit to Duffield Castle and enjoy views across the Derwent Valley. 10 mins from the Station (steps involved)

ECCLESBOURNE VALLEY RAILWAY

Ecclesbourne Valley Railway meets the main line at Duffield. This heritage railway runs steam trains and classic diesel railcars between here and Wirksworth and from Wirksworth to Ravenstor. See posters and look online for details.



DUFFIELD MILLENNIUM MEADOW

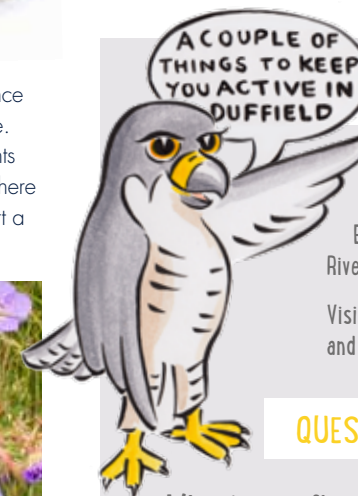
Duffield Millennium Meadow sits at the confluence of the Derwent and its tributary the Ecclesbourne. This nature reserve was created by local residents to enhance the wildlife and beauty of the site. There are at least 3 different habitats that each support a variety of wildlife.



Marsh Cranesbill flowers here in spring & summer
Photo by: Kieron Houston



At Duffield Millennium Meadow look out for the seed pods resembling birds beaks. Photo by: Kieron Houston



EXPEDITION TIME!

Go and see if you can find the spot where the Ecclesbourne meets the River Derwent.

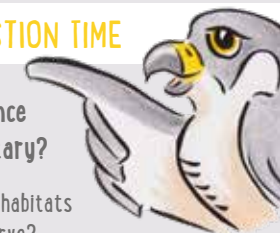
Visit Duffield Castle and try to find the Well.

QUESTION TIME

What is a confluence and what is a tributary?

What are the 3 different habitats created in the nature reserve?

Name an animal and plant for each of these habitats. (CLUE: Read the panels on-site)





Speckled Wood Butterfly
Photo by: Chris Gomersall



TAKE A WALK

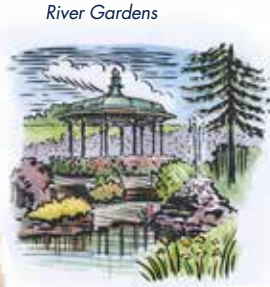
For a walk to Strutt's Mill and the River Gardens, take the steps from Platform 1 along the path through 'The Clusters' (10 mins) and return to the station via the vibrant town centre (10 mins). To visit the Market Place, Memorial Gardens and Belper Parks, leave the station via the ramps to the over bridge and alley to the town centre

BELPER PARKS

Belper Parks Local Nature Reserve is a short walk from the station, it's a great place for a stroll or a picnic. There are ancient flower rich grassland, woodland and a brook providing habitats for a wide range of plants and animals. The main paths are well surfaced and the fitness trail and playground at the top have fine views over Belper and the Derwent Valley.



Belper is a great place to spot Peregrine Falcons as they nest on the mill buildings
Photo by: Gillian Day



River Gardens

STRUTT'S MILL AND RIVER GARDENS

The imposing Mill complex and Museum in Belper is a gateway to understanding cotton spinning in the Derwent Valley and the industrial revolution as a whole.

A walk around Belper highlights the impact of the Strutt family who in the late 1700's and early 1800's built the mill buildings, rows of millworkers' cottages (The Clusters) and harnessed the waters of the River Derwent to power the mill wheels. The impressive River Gardens feature a children's play area, riverside promenade, ponds and rock gardens, also created by the Strutt family.



Strutt's Mill from over the bridge Photo by: Ashley Franklin



Market Place Photo by: Emma Moore

HOW MANY MILLS?

There is a North Mill and an East Mill in Belper. Can you guess which is which?

The original Mill built by Jedediah Strutt in 1786 had a wooden frame and burnt down.

Do you know how the later mills were built?

(This is the method that was later used to build skyscrapers!)



Get your ducks in a row!!!

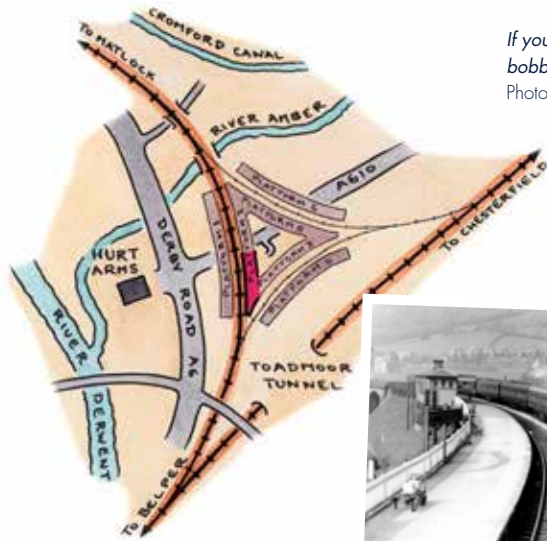
There are lots of ducks in the River Gardens. Can you spot any of these?



Mallard Tufted Pochard



The Clusters Photo by: Emma Moore



If you're lucky you may spot a dipper bobbing by the water's edge.

Photo by: Amy Lewis



TOLLHOUSE

Ambergate has an interesting transport history with canal, road and railway. The canal was built first in 1794, followed by the road in 1817 and the railway was squeezed between them in 1849. Ambergate gained its name from the tollgate near the crossing of the River Amber. This comprised 3 sets of gates and the Tollhouse building near to the The Hurt Arms.



This picture shows a train at the platform that is still in use today.



Betty Kenny Tree (Shining Cliff Woods)

OLD STATION

By 1876, Ambergate had a triangular station layout with six platforms and trains to Manchester, Leeds and London (see above). The current platform is located where Platform 2 is shown highlighted in red. As you leave the station down the steps can you see where platforms 3 and 4 once stood? When you return on the train from Whatstandwell, the eagle-eyed may also see where the railway ran towards Platforms 5 and 6. See if you can find remains of the old station.

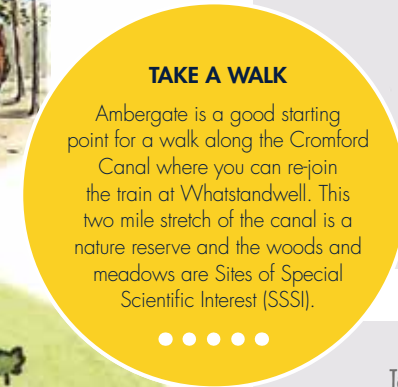


EXTEND YOUR WALK

The more adventurous may take a longer walk to discover the ancient woodland of Shining Cliff Woods, where in spring there is a fine display of Bluebells. You could also hunt in the woods for the remains of an ancient Yew known as the "Betty Kenny" tree is said to be the origin of the lullaby "Rock-a Bye Baby". An Ordnance Survey map is recommended for finding your way to Shining Cliff Woods and take extra care as there is no footway along Holly Lane leading to the woods.



Photo by: Neil Aldridge



TAKE A WALK

Ambergate is a good starting point for a walk along the Cromford Canal where you can re-join the train at Whatstandwell. This two mile stretch of the canal is a nature reserve and the woods and meadows are Sites of Special Scientific Interest (SSSI).



BECOME A 'TWITCHER'

This is a great area for bird watching. Take a small notebook and make simple sketches and notes for identification or look them up on your smartphone. Not surprisingly, I like all birds (but some taste better than others!)



BECOME A TREE DETECTIVE

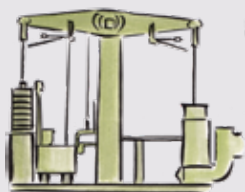
You can probably guess these 2 trees but can your detective skills enable you to identify any other trees? You may need a field guide to help (or maybe you are with a smart Alec!)



ANY IDEA WHAT THIS IS?

There's one at the end of this walk. See if you can find where it is hidden.

Here's a clue: It's really big!



HEROINES OF WHATSTANDWELL

Whatstandwell can boast of 2 famous and heroic women:

Florence Nightingale had a huge impact on the modern nursing profession. She spent her early childhood and many summers at Lea Hurst (a house up on the hill) and returned here in 1856 after nursing soldiers during the Crimean War.

Ellen MacArthur is a world famous solo, long distance yachtswoman, who at 28 years of age became the fastest person to sail around the world.

Ellen MacArthur and her pet dog "Norman"

Photo by: Joss Bleriot/Ellen MacArthur Foundation®

Florence Nightingale Photo from Derbyshire Record Office



TUNNEL TALK

Your voice carries much further in a tunnel. Why do you think that is?

When you get to The Gregory Tunnel, see if you can hold a conversation with someone standing at the other end - You won't need to shout.

CRICH TRAMWAY VILLAGE

Whatstandwell is the nearest station for a visit to Crich Tramway Village. It's an uphill walk (just over a mile) or you could get a bus from Ambergate or Matlock Bath or a taxi.

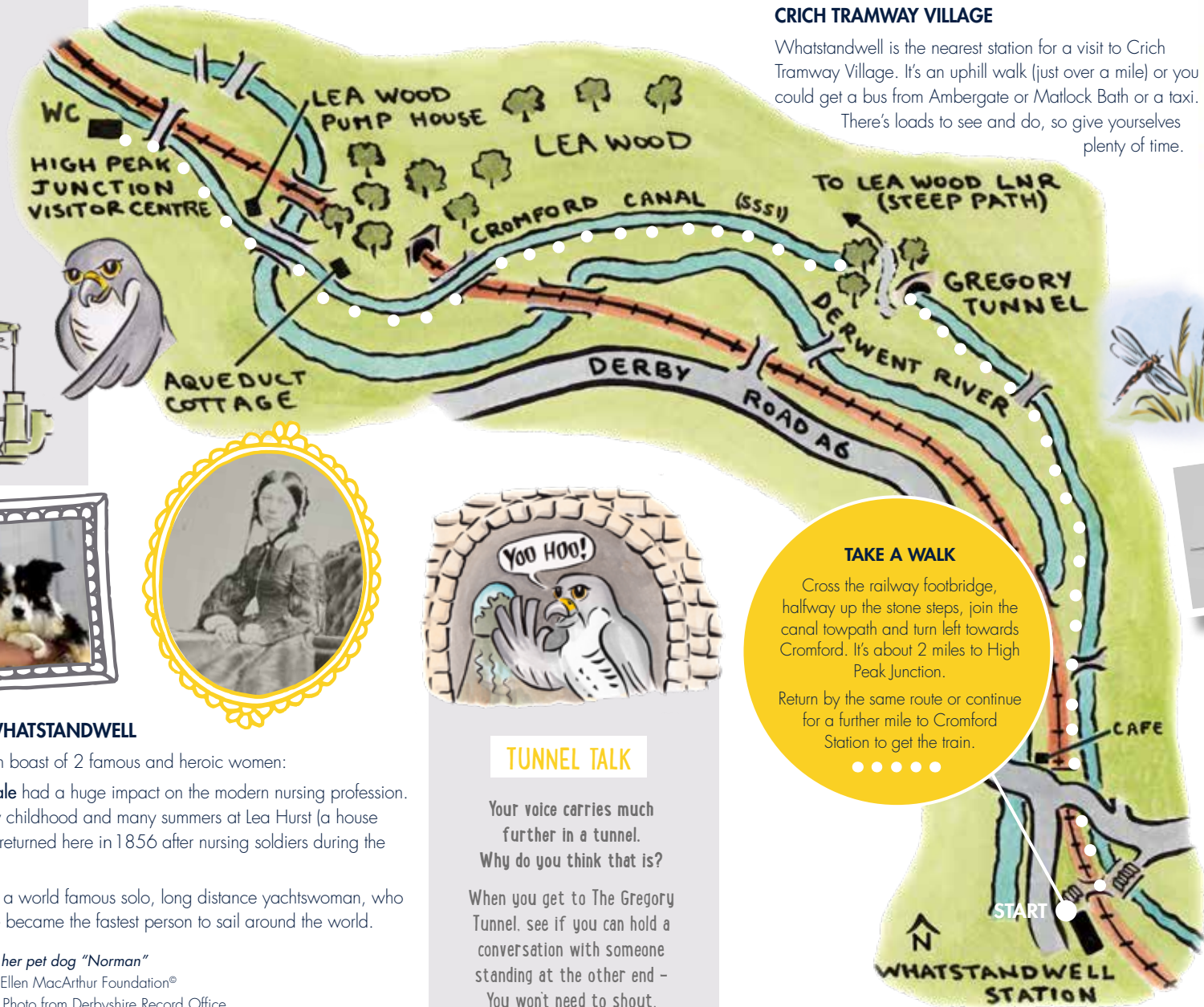
There's loads to see and do, so give yourselves plenty of time.



Keep an eye out for insects along the canal, you can see Pond Skaters and Hawker dragonflies
Dragonfly by: Vicky Nall/ Skater: Shutterstock



TAKE A WALK
Cross the railway footbridge, halfway up the stone steps, join the canal towpath and turn left towards Cromford. It's about 2 miles to High Peak Junction.
Return by the same route or continue for a further mile to Cromford Station to get the train.



CRICH STAND

On the first part of the walk you might spot what looks like a lighthouse on the hills to your right. This is "Crich Stand" and is a memorial to the 11,409 soldiers from the Sherwood Forest Regiment killed in WW1.

Cromford Station building is rather special, your parents may recognise it, as it featured on the record sleeve of the single 'Some Might Say' by Oasis. The lyrics of which include "I've been standing at the station in need of education".



TAKE A WALK

It's a 10 minute walk from the station to Scarthin Rock and Cromford Mill, birthplace of the modern factory. Look at the murals in St Mary's Church (if open). Climb the rock if you're feeling fit and take a stroll around the village. Canal walks (or a boat trip!) start at Cromford Wharf. To Aqueduct cottage on foot takes about 30 mins each way.



NICELY DONE SIR

BECOME A GONGOOZLER

The name given to an idle spectator of the activities on canals. Said to originate from Lincolnshire dialect words: 'gawn' and 'gooze' meaning to stare or gape. It is now a pastime enjoyed by many.

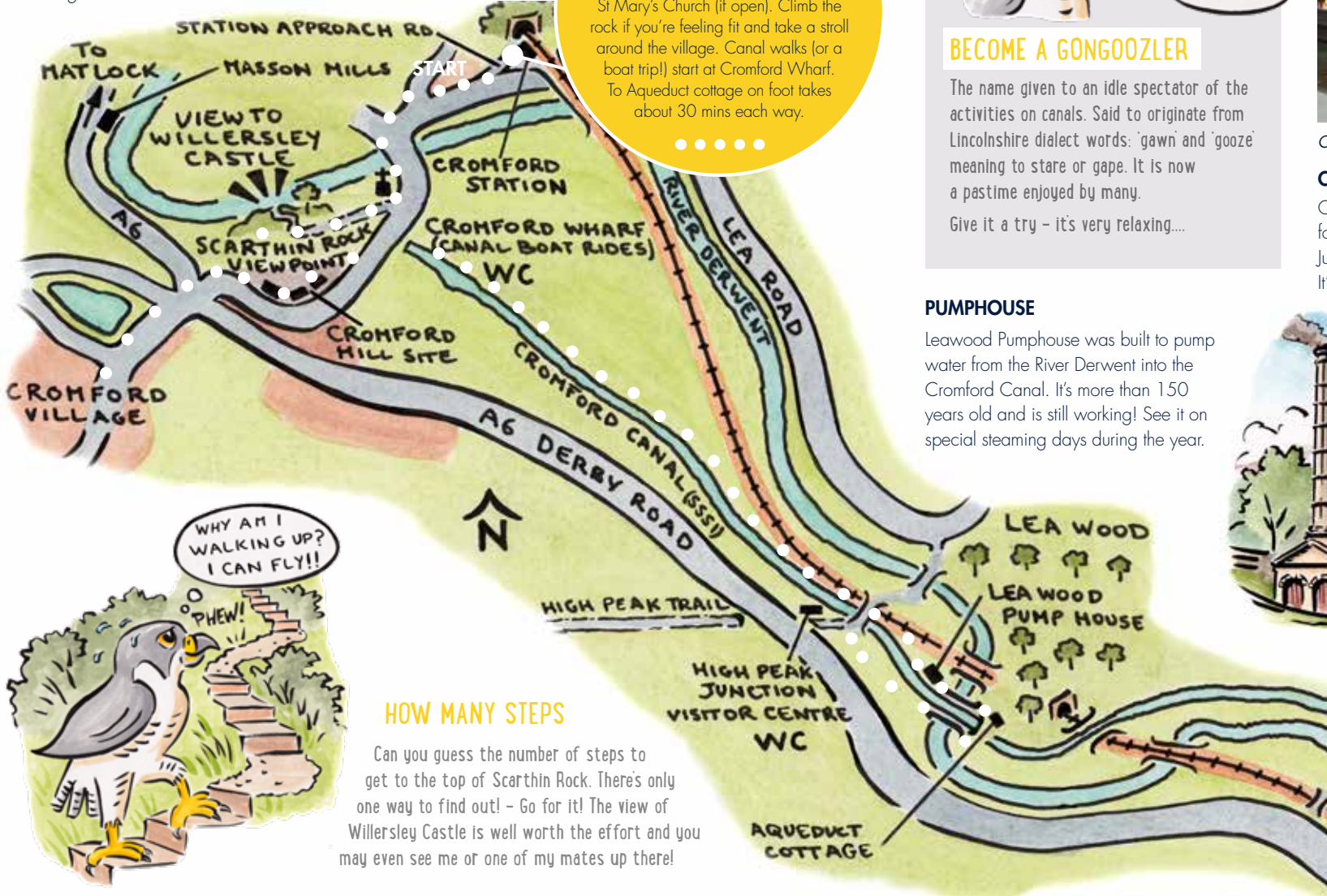
Give it a try - it's very relaxing...



Canal Boat Photo by: Philip Rutt

CROMFORD CANAL

Once an important transport link to the Mills is now a haven for wildlife. The walk from Cromford Wharf to High Peak Junction Visitor Centre takes about half an hour (1.5 miles). It's pushchair and wheelchair friendly.



PUMPHOUSE

Leawood Pumphouse was built to pump water from the River Derwent into the Cromford Canal. It's more than 150 years old and is still working! See it on special steaming days during the year.



DERBYSHIRE COUNTY COUNCIL

CROMFORD CANAL

Opened 1794

Engineered by William Jessop and Benjamin Outram

It ran 14.5 miles from Cromford to Langley Mill and played a pivotal role in the transformation of the Derwent Valley



WHY AM I WALKING UP? I CAN FLY!!

PHEW!

HOW MANY STEPS

Can you guess the number of steps to get to the top of Scarthin Rock. There's only one way to find out! - Go for it! The view of Willersley Castle is well worth the effort and you may even see me or one of my mates up there!

Water voles live along the canal banks Photo by: Shirley Freeman





ONE OF THE COUNTRY'S FIRST TOURIST DESTINATIONS

Matlock Bath is one of the country's first tourist destinations and has been popular since the late 17th Century when the spa waters were discovered. It's heyday was in Victorian times when it became known as "Little Switzerland".

Since 1787, The Heights of Abraham has attracted visitors to the impressive caverns and scenic pleasure grounds. In 1984, Britain's first alpine style cable car was opened providing today's spectacular journey across the Matlock gorge.

GREEN MAN TRAIL

As you walk along Lovers' Walks and through Derwent Gardens look out for twelve sculptures hidden on trees which form the new Green Man Trail. The Green Man is a pagan nature spirit and a symbol of rebirth and the growth cycle renewing each Spring, bringing a plentiful harvest. Decorated with leaves, the Green Man is often found carved into sculptures and buildings. Pick up a trail and quiz sheet from local outlets in Matlock Bath.



Whistlestop Café & visitor centre is in the beautiful old railway station and is owned and run by Derbyshire Wildlife Trust. This family-friendly café offers great coffee and local food.



MASSON MILLS

Masson Mills, built in 1783 and part of the Derwent Valley Mills World Heritage Site, is the finest surviving and best preserved of the Arkwright cotton spinning mills. You can experience sights, smells and sounds of the historic machinery. There is also a shopping village and restaurant.



BIRD'S EYE VIEW

I get great views flying over Matlock Bath but you can take the cable car or climb up to the viewpoint on Lover's Walk. While you're there, see if you can spot these 4 things and fill in the gaps:

- 1) _____ Kingdom.
- 2) The Grand _____
- 3) Cable _____
- 4) Jubilee _____



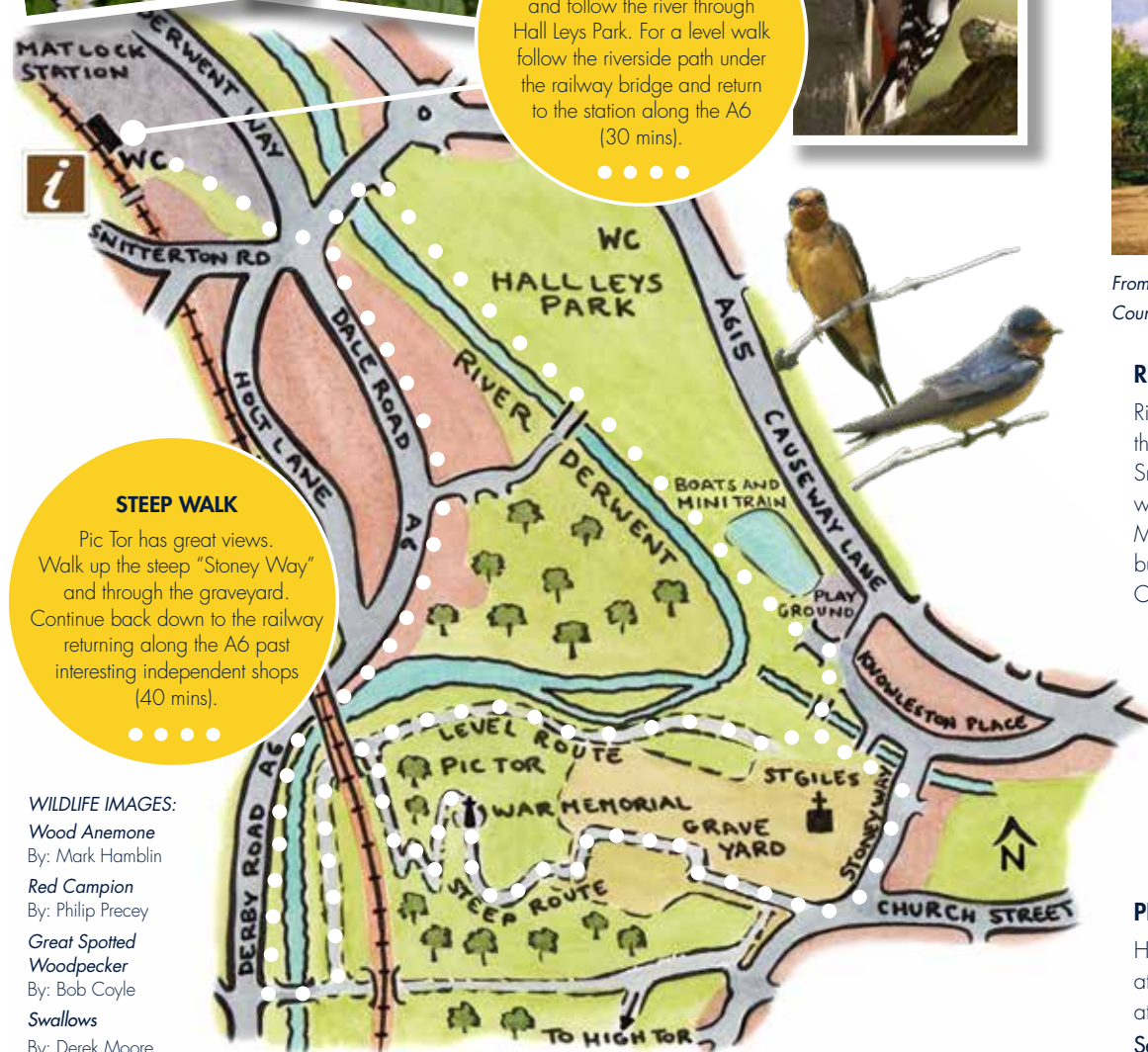
THE GRAND PAVILION

The Grand Pavilion is one of many fine buildings in the town relating to its time as a spa. It now houses the Peak District Mining Museum where there is also Tourist Information available.



TAKE A WALK

Cross the river bridge into town and follow the river through Hall Leys Park. For a level walk follow the riverside path under the railway bridge and return to the station along the A6 (30 mins).



STEEP WALK

Pic Tor has great views. Walk up the steep "Stoney Way" and through the graveyard. Continue back down to the railway returning along the A6 past interesting independent shops (40 mins).

WILDLIFE IMAGES:

- Wood Anemone
By: Mark Hamblin
- Red Campion
By: Philip Precey
- Great Spotted Woodpecker
By: Bob Coyle
- Swallows
By: Derek Moore



From Pic Tor War Memorial there are great views of Matlock, County Hall and Riber Castle Photo by: Peter Keeble

RIBER CASTLE

Riber Castle is a Gothic 'folly' and was created by the local industrialist John Smedley as his family home. Smedley (whose company and mill still exist today) was also responsible for developing hydrotherapy in Matlock during the 19th century. "Smedley's Hydro" building is now County Hall and home to Derbyshire County Council.



PEAK RAIL

Historic steam trains run from Matlock to Rowsley at selected times throughout the year, especially at weekends. See posters and look online for details.

SPOT THE DIFFERENCE

Can you find this building?

It was the old tram stop for a rather special cable operated tram that's now long gone.

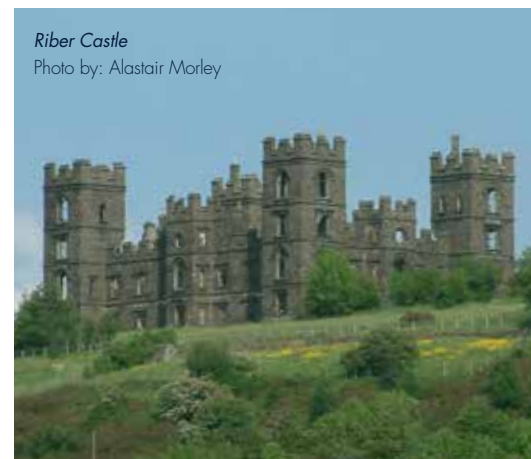


POOH STICKS FRIENDLY

Yes, you know how to play it. The bridges in and around Hall Leys Park are just the place.



Riber Castle
Photo by: Alastair Morley



Places to Visit in the Derwent Valley

We are sure you will want to return another day to explore more places on the Derwent Valley Line. There are many fun places to visit on a day out along the route between Derby and Matlock. From Matlock there are bus services into the Peak District National Park. You can also catch the Derwent Valley Line trains to explore the places along the Trent Valley between Derby and Nottingham.

Here is a list of great places to explore:

PEAK DISTRICT

Chatsworth (bus link from Matlock)
chatsworth.org

Haddon Hall (bus link from Matlock)
haddonhall.co.uk

MATLOCK

Peak Rail (5)
peakrail.co.uk

MATLOCK BATH

Heights of Abraham (5)
heightsofabraham.com

Whistlestop Cafe (1)
derbyshirewildlifetrust.org.uk

Peak District Mining Experience (10)
peakdistrictleadminingmuseum.co.uk

Gullivers Kingdom (15)
gulliversfun.co.uk

MATLOCK BATH/CROMFORD

Sir Richard Arkwright's Masson Mills
Working Textile Museum (20)
massonmills.co.uk

CROMFORD

Cromford Mill and Village (10)
cromfordmills.org.uk

Cromford Canal Narrowboat Cruises (10)
birdswood.org

WHATSTANDWELL

Crich Tramway Village (30) or bus link
from Ambergate or Matlock Bath
tramway.co.uk

BELPER

Strut's North Mill (10)
belpernorthmill.org.uk

DUFFIELD

Ecclesbourne Valley Railway (5)
e-v-r.com

DERBY

Derby Quad (20 or bus link)
derbyquad.co.uk
Derby Museum & Art Gallery
(20 or bus link)
derbymuseums.org



Pickford's House Museum
(20 or bus link)
derbymuseums.org

ATTENBOROUGH

Attenborough Nature Centre (10)
attenboroughnaturecentre.co.uk

NOTTINGHAM

Galleries of Justice (10)
galleriesofjustice.org.uk

Nottingham Castle (15)
nottinghamcity.gov.uk/castle

Brewhouse Yard Museum (10)
nottinghamcity.gov.uk/castle

Nottingham Contemporary (10)
nottinghamcontemporary.org

City of Caves (10)
cityofcaves.com



WALKING TIME FROM THE NEAREST STATION

Most attractions listed are within a 20 minute walk of their nearest station, with many even closer. The walking time is indicated in brackets after each attraction name e.g. (10) = 10 minute walk.

PLAYGROUNDS

Along several of the walks there are playgrounds shown on the maps including at Belper River Gardens, Belper Parks, Lovers' Walks and Derwent Gardens in Matlock Bath, and Hall Leys Park in Matlock. There are also extensive play areas at several visitor attractions including at Crich Tramway Village, Gulliver's Kingdom and The Heights of Abraham.

Derwent Valley Line Travel Information

Trains on the Derwent Valley Line operate a frequent service between Nottingham, Beeston, Attenborough, Long Eaton, Derby and the local Derwent Valley Line Stations.

The journey from Derby to Matlock takes around 30 minutes, and from Nottingham about an hour. From Matlock bus services run to the Peak District National Park.

FOR MORE INFORMATION PLEASE VISIT:

National Rail Enquiries – 03457 48 49 50
or www.nationalrail.co.uk
Traveline 0871 200 22 33
www.derbybus.info

DERWENT VALLEY STATION TO STATION WALKS

Twelve Station to Station Walks between 2 and 8 miles offer scenic hillside, riverside and woodland walks between stations. Leaflets available at

derbyshire.gov.uk/derwentvalleymills

DERBY CATHEDRAL PEREGRINE PROJECT



Photo by: Nick Moyes



The character of Perri the Peregrine is based on the Peregrine Falcons that nest at Derby Cathedral and on Belper Mill.

The peregrines at Derby Cathedral have become very famous due to the webcams situated at the Cathedral. These give everybody, access to the birds around the clock, without disturbing them! On the 'Nest cam' you can often see the courtship and nesting activities, whilst on the 'Tower cam' you can watch them roosting, resting and feeding.

Throughout the summer you can visit the peregrines yourself with one of Derbyshire Wildlife Trust's watch point events which are set up on Derby Cathedral Green. This is normally when the chicks have hatched, so hopefully you'll get a good chance at spotting one. For more information visit

[www.derbyshirewildlifetrust.org.uk/
derby-cathedral-peregrine-project](http://www.derbyshirewildlifetrust.org.uk/derby-cathedral-peregrine-project)

FOR MORE INFORMATION PLEASE VISIT:

www.derbyshirewildlifetrust.org.uk

www.derwentvalleymills.org

www.scenicrailbritain.com/derwentvalleyline

This booklet has been produced with the support of the following organisations:

